



# ANR Monthly Customer Update

February 2021



# Agenda

---

## 1. Safety moment & TC Energy update

DeAnna Parsell, Noms & Scheduling

## 2. Storage update

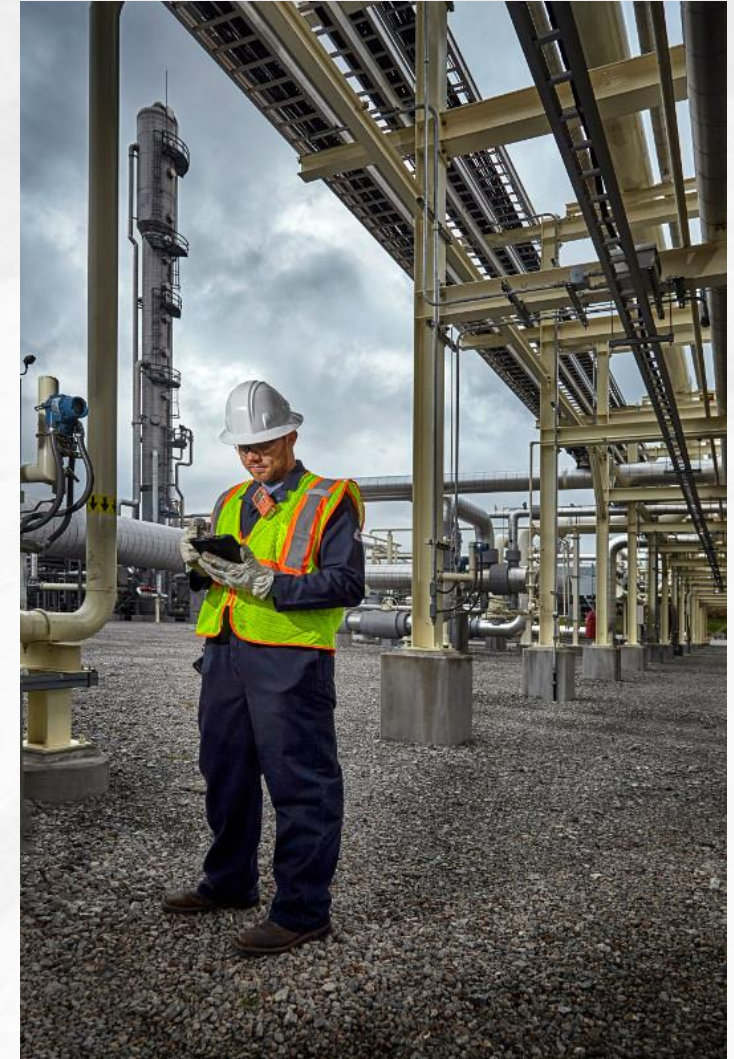
Jeffery Keck, Operations Planning

## 3. Operational / Power Desk update

Michael Gosselin, Operations Planning

## 4. Noms & Scheduling update

DeAnna Parsell, Noms & Scheduling



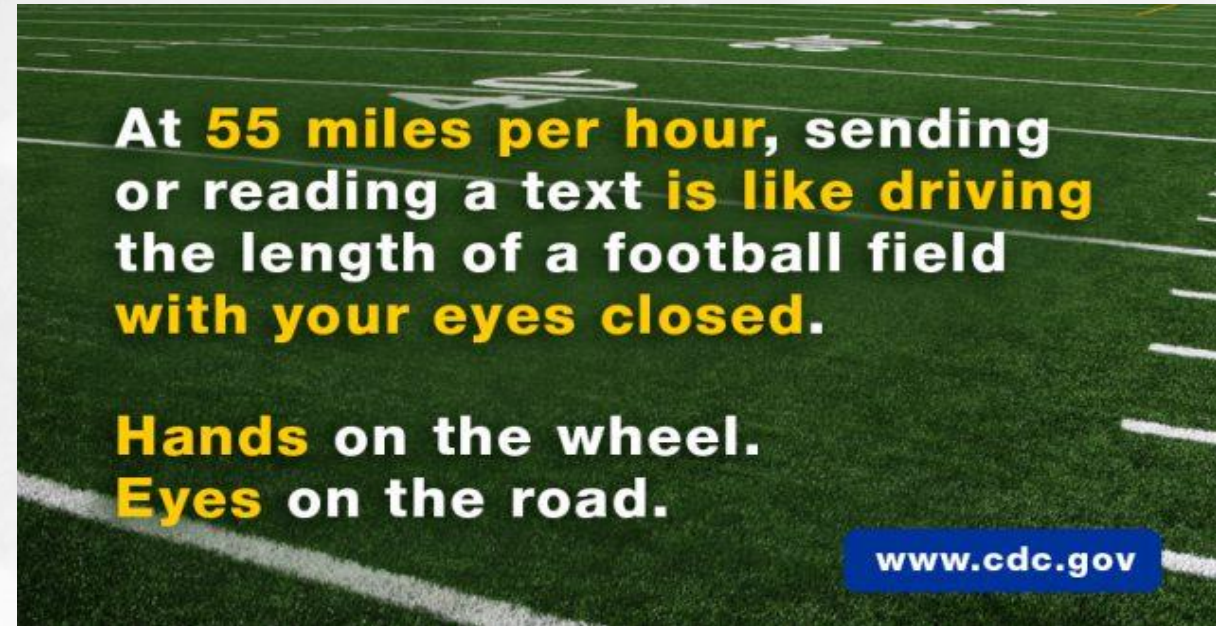


## Safety Moment

---

### Mitigation Actions for Distracted Driving:

- Put the cell phone down while driving
- Put your cellphone on airplane mode if needed to eliminate distractions, as well as the urge to answer a text, call or email alert.
- If you need to text or call while driving pull over to a safe area
- When traveling as a passenger, urge any driver who is using their cellphone to put it down
- If there is another driver on the road who is using a phone while driving, maintain a safe distance from them and be a defensive driver



Our people and pipelines "performed extraordinarily well, showing the valuable role that we play in providing energy to millions of individuals and businesses when it's needed most."

**Stan Chapman**

*During TC Energy's fourth quarter financial results conference call*



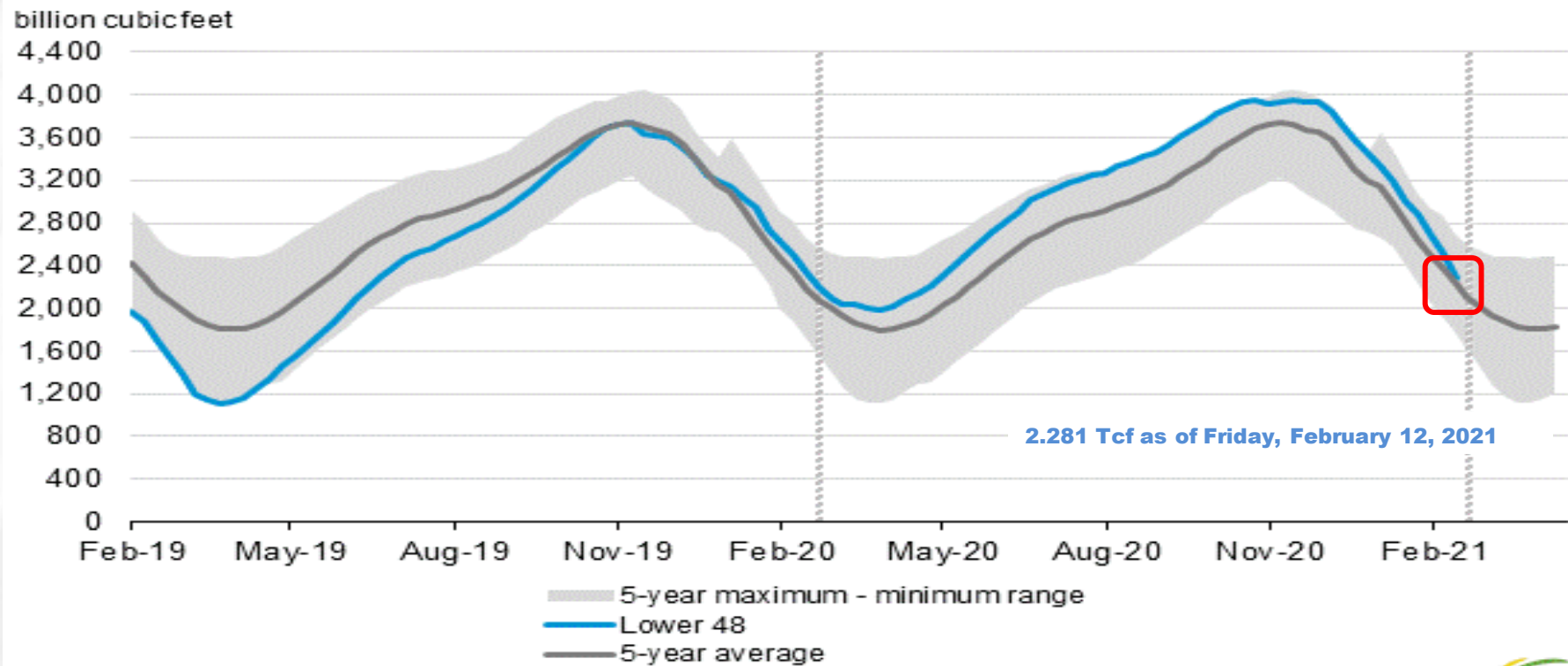


Storage update

Jeffery Keck – Operations Planning

# EIA storage position: The big picture

*Working gas in underground storage compared with the five-year maximum and minimum*



Source: U.S. Energy Information Administration



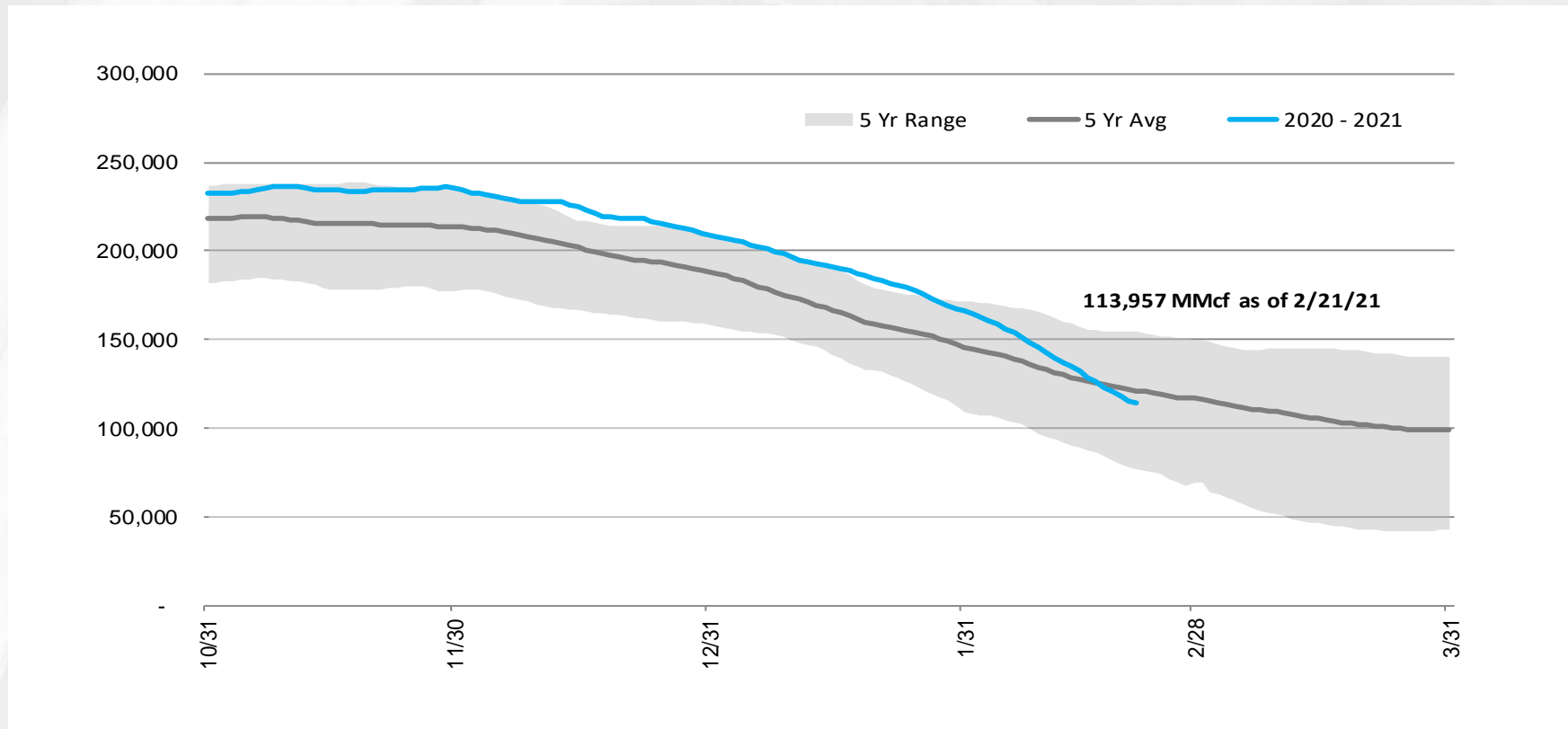
105  
bcf

than February 2020

57  
bcf

above the  
five-year average

# Storage position



28  
bcf

*than February 2020*

7  
bcf

*above the  
five-year average*

# Storage operations

---

- From Jan. 14 – Feb. 21, storage activity averaged a withdrawal of 2.0-Bcf/d. Daily activity varied from a withdrawal of 600-MMcf/d to as much as 3.0-Bcf/d.
- From Feb. 7 – Feb. 19, withdrawal has averaged almost 2.8 Bcf/d
- ANR has met all firm customer demand for storage activity.
- Storage capacity is 45 percent full four months through the withdrawal season. This compares to 76% full last month.
- There are currently no postings restricting storage activity and no planned restrictions on DDS capacity.





# Storage operations

---

- Storage activity has moderated from the high withdrawals experienced over the last couple of weeks.
  - Current forecasts do not show any extreme temperature drops.
- There is currently no planned maintenance of note for storage
- All storage fields are ready and available for withdrawal.
- The available capacity will continue to be reflected on the EBB under the operationally available capacity.
- While storage capacity has dropped significantly over the last month, withdrawal capacity remains in good shape to meet customer demand.

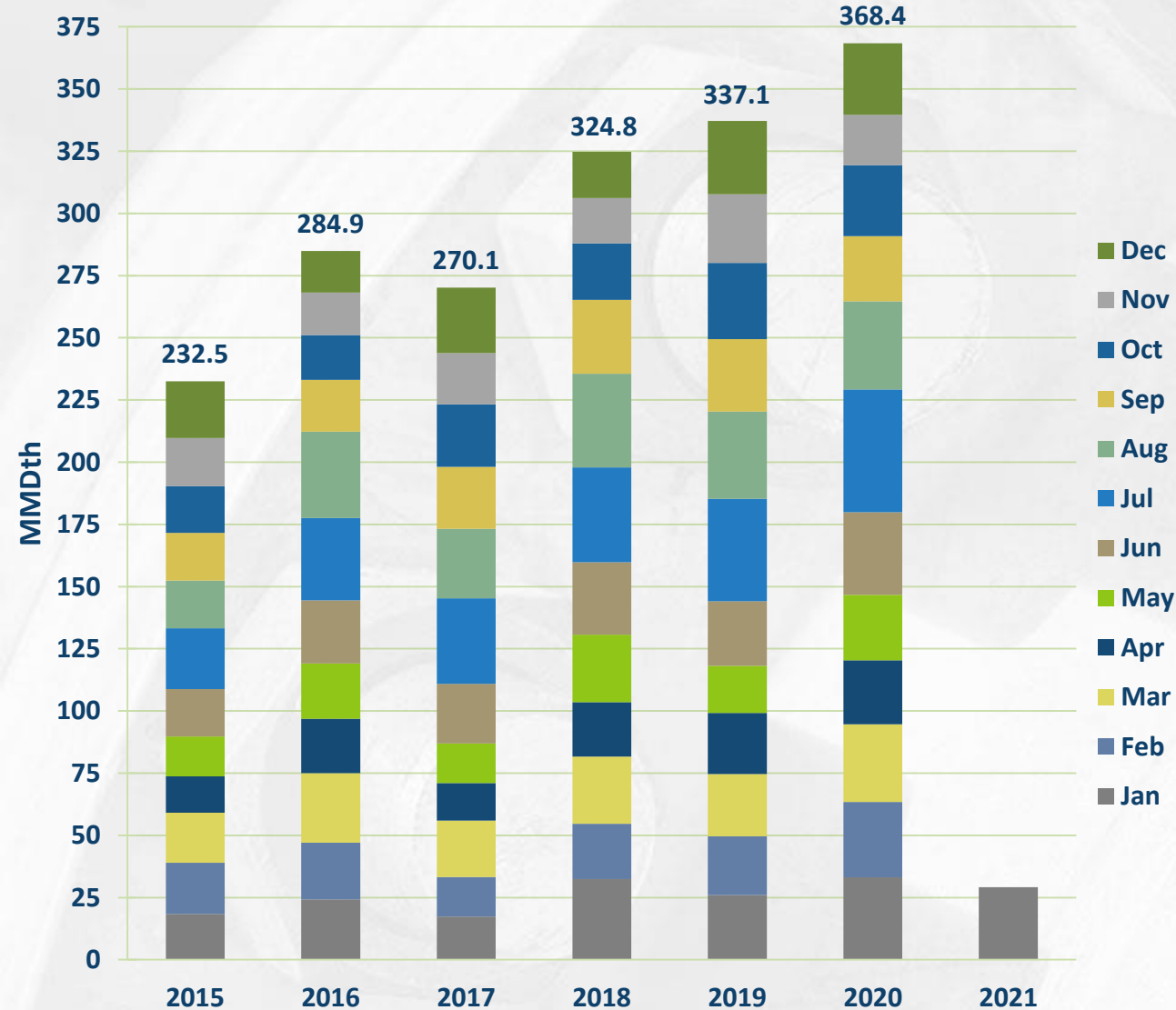


Operational update

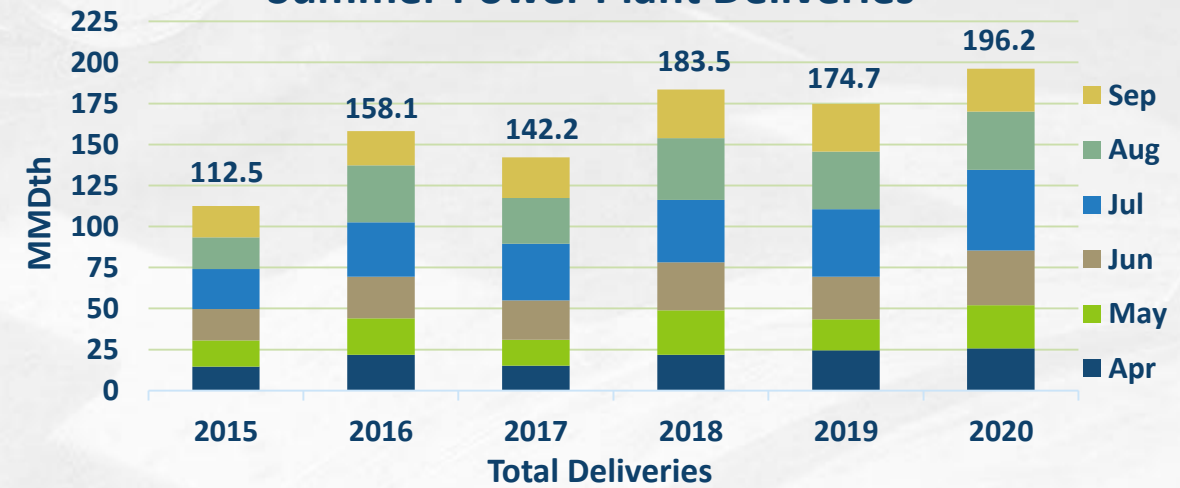
Michael Gosselin – Operations Planning

# Monthly deliveries to Power Plants

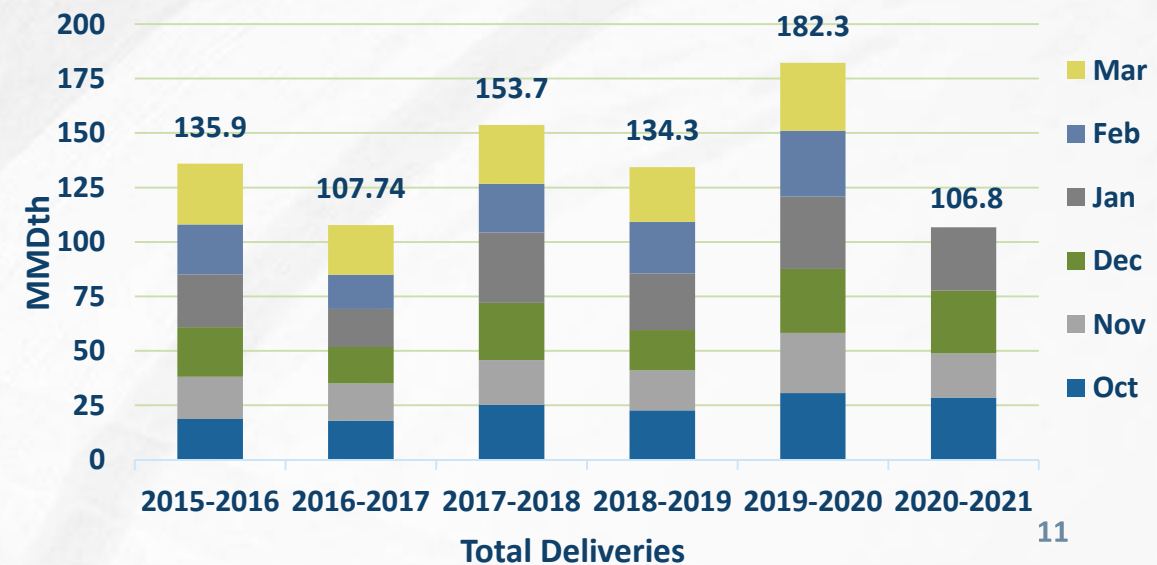
## Total Monthly Power Plant Deliveries



## Summer Power Plant Deliveries



## Winter Power Plant Deliveries



# Capacity impacts

		Cap (MMcf/d)		February														March																													
Dates	Area/Segment/Location	Impact	Avail																																												
<b>Market Area &amp; Storage</b>				16	17	18	19	20	21	22	23	24	25	26	27	28	1	2	3	4	5	6	7	8	9	10	11	12	13	14	15	16	17	18	19	20	21	22	23	24	25	26	27	28	29	30	31
<b>Marshfield VGT - DEL (LOC #485885) &amp; REC (LOC #28873)</b>																																															
3/16 - 3/17	Marshfield CS - Safety System Testing	N/A	FPO																																												
<b>Southwest Area &amp; Mainline</b>				16	17	18	19	20	21	22	23	24	25	26	27	28	1	2	3	4	5	6	7	8	9	10	11	12	13	14	15	16	17	18	19	20	21	22	23	24	25	26	27	28	29	30	31
<b>Roberts CO NO 1 Del (LOC# 736566)</b>																																															
12/1 - 2/28	Incompatible Pressure	200	Shut In															TBD																													
<b>Southeast Mainline</b>				16	17	18	19	20	21	22	23	24	25	26	27	28	1	2	3	4	5	6	7	8	9	10	11	12	13	14	15	16	17	18	19	20	21	22	23	24	25	26	27	28	29	30	31
<b>Pine Prairie North DEL (LOC #490941)</b>																																															
12/2 - 2/28	Incompatible Pressure	247	Shut In															TBD																													
<b>Pine Prairie North REC (LOC #490940)</b>																																															
2/2 - 3/1	Eunice CS - Station Upgrades	N/A	FPO																																												
<b>Evangeline Southbound (LOC #505591)</b>																																															
3/9 - 3/11	Jena CS - Turbine Inspection	246	930																																												
<b>Jena Southbound (LOC #9505489)</b>																																															
2/2 - 3/1	Eunice CS - Station Upgrades	N/A	FPO																																												

# Capacity impacts (continued)

		Cap (MMcf/d)		February																								March																			
Dates	Area/Segment/Location	Impact	Avail																																												
Southeast Area				16	17	18	19	20	21	22	23	24	25	26	27	28	1	2	3	4	5	6	7	8	9	10	11	12	13	14	15	16	17	18	19	20	21	22	23	24	25	26	27	28	29	30	31
<b>Multiple Meters - Cameron Area</b>																																															
12/2 - 4/7	Pipeline - Integrity / Hurricane Laura Damage	N/A	Shut In																																												
<b>Acadia Power Plant (LOC #322045)</b>																																															
3/22 - 3/26	Meter RTU Replacement	N/A	Shut In																																												
<b>Bobcat Storage - DEL (LOC #742883) &amp; REC (LOC #742882)</b>																																															
3/29 - 4/2	Meter RTU Replacement	N/A	Shut In																																												
<b>Eunice Eastbound (LOC #226641)</b>																																															
2/15 - 3/20	Pipeline - Class Change (Hydro Test)	181	375																																												
<b>Egan - DEL (LOC #186899) &amp; REC (LOC #186900)</b>																																															
3/2 - 3/5	Meter RTU Replacement	N/A	Shut In																																												
<b>Eunice Southbound (LOC #226640)</b>																																															
3/15 - 3/26	502 Line Integrity Dig & New Tie-In	260	0																																												
<b>Pine Prairie South REC (LOC #766184)</b>																																															
2/2 - 3/1	Eunice CS - Station Upgrades	N/A	FPO																																												
3/8 - 3/12	Meter RTU Replacement	N/A	Shut In																																												
<b>Pine Prairie South DEL (LOC #766185)</b>																																															
2/19 - 2/26	Eunice 599 Line Isolation Valve Replacement	N/A	Shut In																																												
3/8 - 3/12	Meter RTU Replacement	N/A	Shut In																																												
<b>Tepetate (LOC #1387567)</b>																																															
2/19 - 2/26	Eunice 599 Line Isolation Valve Replacement	N/A	Shut In																																												
<b>Eunice Total Location (LOC #505592)</b>																																															
2/2 - 3/1	Eunice CS - Station Upgrades	226	950																																												
TBD	Eunice CS - Safety System Test	226	950																																TBD												

# Outage postings

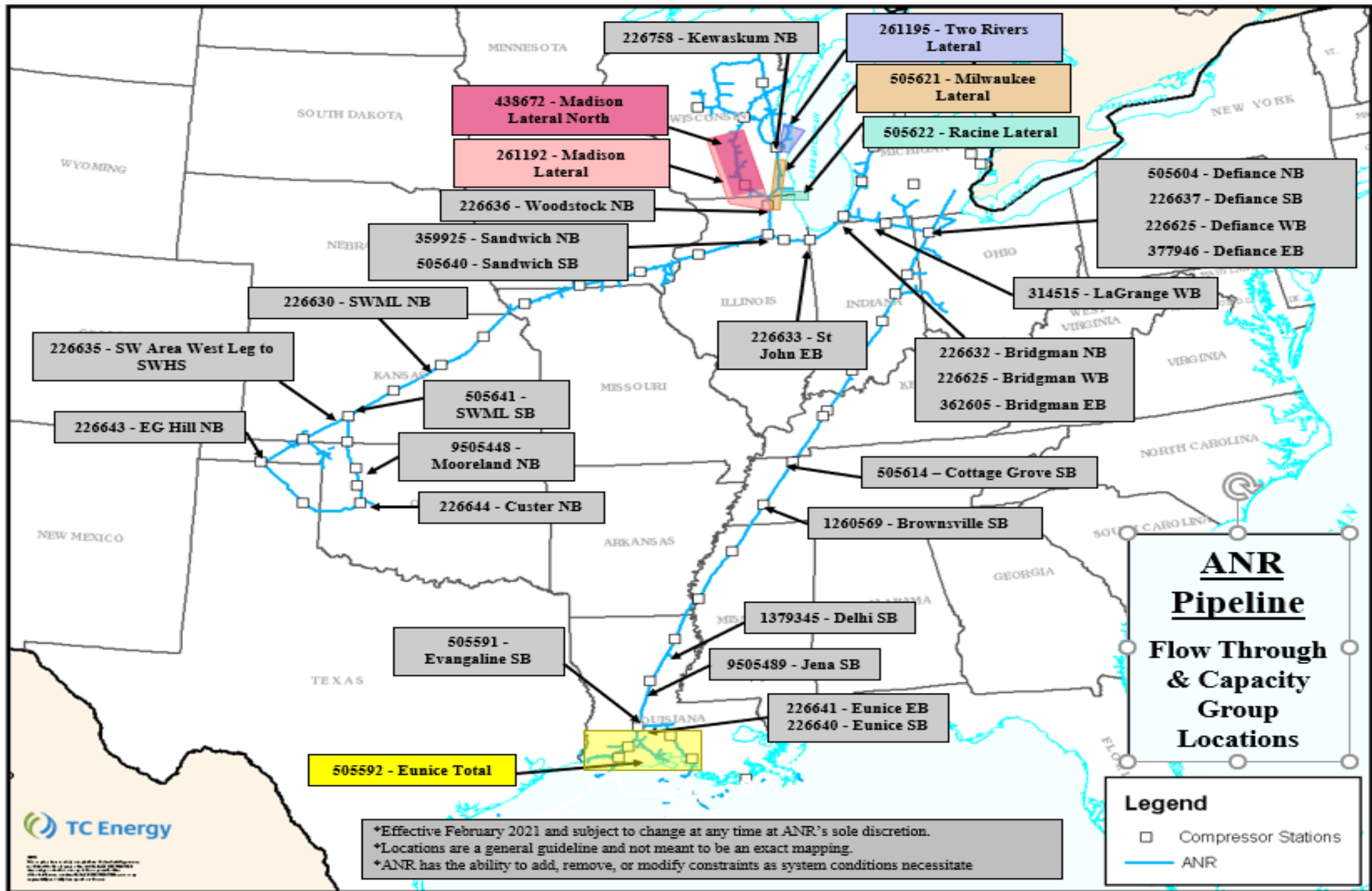
---

- Service impacts are estimates. Actual nominations, markets, weather and pipeline conditions determine any level of curtailments.
- Projects may be added, altered, delayed or cancelled. Emergent work cannot be planned and will happen from time to time.
- Notice of such planned work, including additions or changes, will be provided via a posting under the Planned Service Outage (PSO) category in GEMS. Emergent work will be posted under the Critical Notice category as soon as possible.





Nominations & Scheduling update  
DeAnna Parsell – Noms and Scheduling





# ANR customer assistance

---

For customer assistance concerning scheduling priorities, firm service rights and features, GEMS new user training, virtual and face-to-face meetings, etc., please contact the ANR Noms & Scheduling Team:

**Toll Free:** 1-800-827-5267

**Group Email:** [ANR\\_Noms\\_Scheduling@tcenergy.com](mailto:ANR_Noms_Scheduling@tcenergy.com)

**Web address for the ANRPL Tariff:** [ebb.anrpl.com](http://ebb.anrpl.com)

**Questions?**

